

QUARTER TONE FINGERING CHART

for Baritone Saxophone

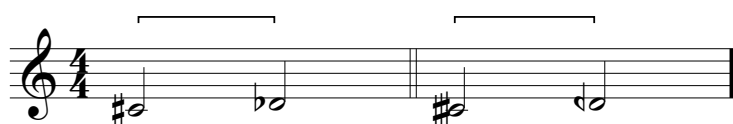
* Put the tongue on the reed to avoid the multiphonic and flat the note very much

Sharp a little bit ↑ or a lot ↑↑ the note by your embouchure

Flat a little bit ↓ or a lot ↓↓ the note by your embouchure

∠ Open slightly the key beside

1
2
3
A
4 ↓↓
5
6



1
2
3
4 * ↓
5
6
D# + C

1
2
3
4 C# ↑↑
5
6

1
2
3
4 * ↓↓
5
6
C

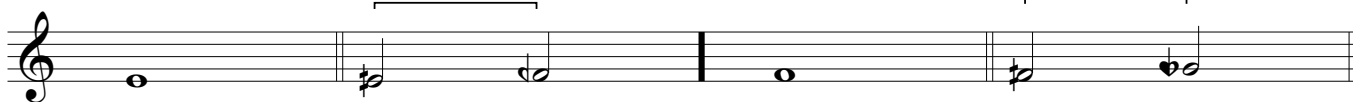
1
2
3
4 C# ↑↑
5
6
D#



1
2
3
B (+ Bb)
4 * ↓↓
6
C

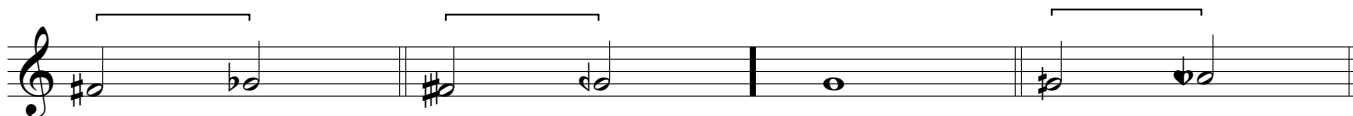
1
2
3
4 ↓↓
5
6

1
2
3
B (b)
5 ↓↓
6



1
2
3
TF 5 ↑↑

1
2
3 * ↓↓
A ∠ G#



QUARTER TONE FINGERING CHART

Joan Martí-Frasquier 2017

1
2
B
4
5
6
C

1 P
3
4
5
6
C

1
2
3
TA 4
5
6
C

1
2
3
Bb
4
5
6
C

1 P
TA

1
2
3
TC (4)
(5)
(6)

2
TC

C1
1 (P)

8ve
1
2
3
C#
4
5
6

C2
1
2

C2

C3
(2)

C4
1 (P)

8ve
1
2
3
B
4
5
C

X

8ve
1
2
3
Bb
4
6

8ve
1
2
3
C#
4
5
D#

8ve
1
2
3
C
4

C1
C2
C3
C4
C5

8ve
1
2
3
B
5
6

(C1)
(C2)
C3
C4

C5
1P
↓

C3
X

QUARTER TONE FINGERING CHART

Joan Martí-Frasquier 2017

8ve
1
2
3
TF 5 ↑↑

8ve
1
2
3
Bb ↓↓

∠ G#

The first staff shows a sequence of notes: G# (quarter), Bb (quarter), G# (quarter), Bb (quarter), G# (quarter), Bb (quarter). Brackets group the first two notes, the next two notes, and the last two notes. Fingering annotations are placed above the notes: '8ve 1 2 3 TF 5 ↑↑' above the first G#, '8ve 1 2 3 Bb ↓↓' above the first Bb, and '∠ G#' above the final G#.

8ve
1
2
4
5
↓

8ve
1
2
3
TA 4 ↓

The second staff shows the same sequence of notes as the first. Brackets group the first two notes, the next two notes, and the last two notes. Fingering annotations are placed above the notes: '8ve 1 2 4 5 ↓' above the first G#, and '8ve 1 2 3 TA 4 ↓' above the first Bb.

8ve
1 P
TA ↑

8ve
1
2
3
TC ↓

The third staff shows the same sequence of notes. Brackets group the first two notes, the next two notes, and the last two notes. Fingering annotations are placed above the notes: '8ve 1 P TA ↑' above the first G#, and '8ve 1 2 3 TC ↓' above the first Bb.

8ve
2
TC

8ve
C1
1 (P)

The fourth staff shows the same sequence of notes. Brackets group the first two notes, the next two notes, and the last two notes. Fingering annotations are placed above the notes: '8ve 2 TC' above the first G#, and '8ve C1 1 (P)' above the first Bb.

8ve
C2
1 (P)

8ve
C3
2

The fifth staff shows the same sequence of notes. Brackets group the first two notes, the next two notes, and the last two notes. Fingering annotations are placed above the notes: '8ve C2 1 (P)' above the first G#, and '8ve C3 2' above the first Bb.